

# A Very Important Proposal.

It is with great pleasure that I invite you to consider becoming a Corporate Friend of the Albury Wodonga Regional Cancer Centre Trust Fund. I urge you to take the time to read this prospectus to learn more about us, the Cancer Centre and how your organisation can get involved and make a significant difference.

The reality is that there are so many charities out there promoting themselves and asking for donations (with 99% of them being legitimate, worthwhile causes) that it's hard to know who to support. ***The Albury Wodonga Regional Cancer Centre Trust Fund's point of difference is that we are a 100% local charity organisation supporting a vital local service, where 100% of the monies raised will stay in our own community and help our family members, friends, colleagues, and acquaintances who may be going through the cancer journey.***

Help us change the lives of people in our community and support the Trust Fund as a Corporate Friend. We look forward to hearing from you soon.

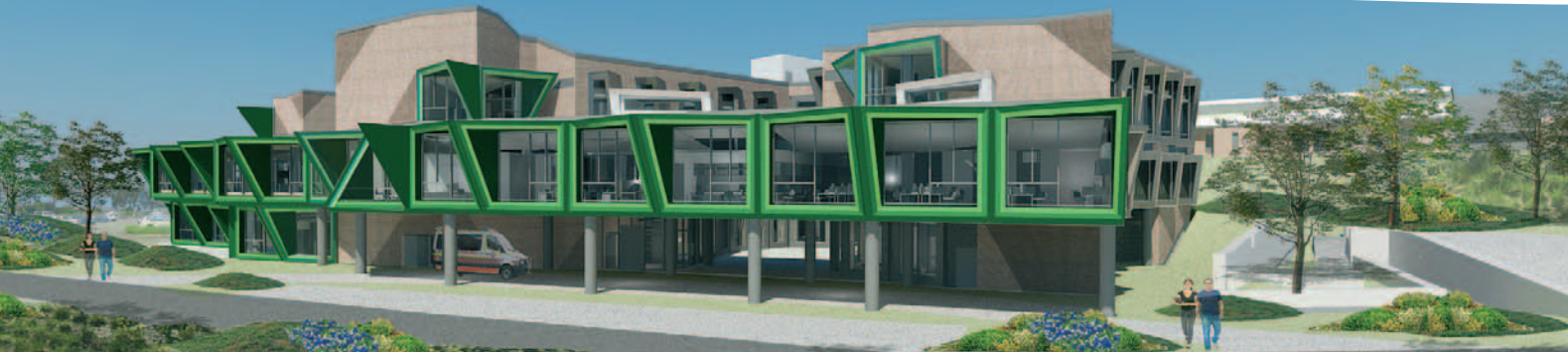
**Di Thomas** Chairperson  
Albury Wodonga Regional Cancer Centre Trust Fund

## Albury Wodonga Regional Cancer Centre.

Albury Wodonga is a leader in the provision of cancer services in regional Australia. The Albury Wodonga Regional Cancer Centre will house the most modern cancer treatment facilities of the day and will unite cancer services under one roof offering a place to educate, support, research, diagnose and treat all forms of cancer. The Albury Wodonga Regional Cancer Centre will include:

- 30 inpatient beds
- 30 chair Day Chemotherapy facility
- 17 Medical & Allied Health consulting rooms
- 'Wellness Centre' offering support services and complementary therapies like massage, exercise therapy, yoga and tai chi, nutrition and diet advice, meditation and counselling
- 2 paediatric treatment chairs connected to the current paediatric unit
- A PET/CT scanner facility on the Albury Hospital site
- A Brachytherapy service for the region
- An education and training facility
- Additional car parking

 "In a gentle way, you can shake the world." Mahatma Gandhi



# Thank you.

Thank you for your consideration.

If you would like the unique opportunity to deliver a clear message that you have a genuine commitment to supporting the local community where you live and work, then please contact our Fundraising, Marketing and Events Manager for further information or to make a commitment.

**Jane Evans** - Fundraising, Marketing and Events Manager  
Albury Wodonga Regional Cancer Centre Trust Fund

Office based at Murray Valley Private Hospital Wodonga  
Office open: Monday, Wednesday and every 2nd Friday  
PO Box 479, Albury NSW 2640  
Phone: 02 6056 7023  
Email: [info@awcancertrust.org.au](mailto:info@awcancertrust.org.au)

[www.awcancertrust.org.au](http://www.awcancertrust.org.au)



Join the conversation on Facebook at **Albury Wodonga Cancer Trust**  
Visit Albury Wodonga Regional Cancer Centre Trust Fund on Facebook and add your message of support for cancer services and funding in our region.

## Corporate Friend Prospectus

WITH YOUR SUPPORT  
*we shine*



**Albury Wodonga** Regional Cancer Centre Trust Fund Inc.



Supporting those supporting us all.

**Albury Wodonga** Regional Cancer Centre Trust Fund Inc.





# Investing your financial contribution.

## Who is the Trust?

The Albury Wodonga Regional Cancer Centre Trust Fund has been established by the Albury Wodonga Cancer Foundation to support cancer services in the region, in particular the Albury Wodonga Regional Cancer Centre, and provide quality care to patients and families.

A high level local executive group from business, industry and government oversee the management of the Trust Fund. More information on our governance can be found at [www.awcancertrust.org.au](http://www.awcancertrust.org.au)

## How your financial contribution will be invested

The Trust Fund Board will allocate your financial contribution to the service area most in need.

Some examples of how your financial contribution will be used include:

- The purchase of new life saving cancer equipment
- Ongoing upgrades of essential cancer equipment
- Professional development programs and training for staff in the latest technology
- Attendance of staff at major cancer forums
- Supporting cancer research
- Supporting other unique cancer related projects

## Why become a Corporate Friend with the Trust Fund?

A Corporate Friend of the Trust Fund is a partnership created to meet your corporate social responsibility, as well as our fundraising and awareness objectives, to achieve a truly mutually beneficial relationship. It is about partnering for good and creating win-win-win partnerships.

Becoming a Corporate Friend of the Trust Fund is a unique opportunity for your organisation to help this region develop an outstanding health facility that will benefit so many who have been touched by cancer.

Did you know that 1 in 2 Australian men and 1 in 3 Australian women will be diagnosed with cancer by the age of 85? Help us support those supporting us all.

# Corporate Friend options

We understand that different organisations have different needs and objectives, so we have a flexible and collaborative approach to all Corporate Friends. Packages can be individually and uniquely designed to be mutually beneficial as we want you to benefit from the partnership too.



The only thing we ask is that our Corporate Friends are truly committed to working with us to make a difference to the lives of local people going through the cancer journey and their families.

*“How wonderful it is that nobody need wait a single moment before starting to improve the world.” Anne Frank*



## 1. SHINE SUPPORTER

We view our Shine Supporters as our flagship partners and central to our success at the Trust Fund; becoming a Shine Supporter is also an excellent opportunity for your organisation - we want you to shine, to stand out from your competitors. We offer the following in exchange for your financial contribution:

- Acknowledgement as a ‘Shining Light’ major supporter on the Trust Fund’s website and Facebook page including your company logo, a 100 word organisation description and hyperlink to your website;
- Acknowledgement as a ‘Shining Light’ major supporter (via company logo) on the official Corporate Friends acknowledgement board situated within the Cancer Centre once completed in mid-2016;
- A ‘Shining Light’ A3 framed certificate of acknowledgement to be placed in a prominent position at your workplace such as the main foyer or staff room;
- Four complimentary tickets to all Trust Fund events held (may include cocktail receptions, charity golf days, health and wellbeing expos etc);
- Extensive branding opportunities at all Trust Fund events held, including display of promotional materials (organisation to provide banner or coreflute) within the event venue;
- Use of the Trust Fund supporter logo for the life of the Shine Supporter package to help market your organisation as a proud supporter and ‘Shining Light’ of the Cancer Centre;
- Personal updates from the Trust Fund Board on the progress of the Cancer Centre from construction through to opening and beyond, and a personalised tour onsite during the latter stages of construction;
- One editorial story in the Border Mail per financial year, outlining the ongoing commitment your organisation has made to the Trust Fund and the benefits for both organisations; and
- A personal invitation for two people from your organisation to attend the Trust Fund’s official ‘Shining Light’ major supporter function once a year.

**Your investment = \$15,000 or greater** per financial year for three years.



## 2. SPARKLE SUPPORTER

We are confident that your participation as a Sparkle Supporter with the Albury Wodonga Regional Cancer Centre Trust Fund, a very worthy local cause, will provide your organisation with exceptional rewards. We can offer the following in exchange for your financial contribution:

- Acknowledgement as a Sparkle Supporter on the Trust Fund’s website and Facebook page including your company logo and hyperlink to your website;
- A Sparkle Supporter A4 framed certificate of acknowledgement to be placed in a prominent position at your workplace such as the main foyer or staff room;
- Two complimentary tickets to all Trust Fund events held (may include cocktail receptions, charity golf days, health and wellbeing expos etc);
- Use of the Trust Fund supporter logo for the life of the Sparkle Supporter package to help market your organisation as a proud supporter of the Cancer Centre;
- Personal updates from the Trust Fund Board on the progress of the Cancer Centre from construction through to opening and beyond; and
- A personal invitation for two people from your organisation to attend the Trust Fund’s official supporter function once a year.

**Your investment = \$10,000 - \$14,000** per financial year for three years.



## 3. SHIMMER SUPPORTER

Shimmer Supporters help us meet our ongoing fundraising targets by gaining significant grass roots community, customer and employee engagement through the coordination of events and activities in aid of the Trust Fund.

Ideas include a charity golf / tennis / bowls day, a Friday afternoon karaoke session, a racing day luncheon such as Albury Gold Cup or Melbourne Cup, a crazy shirt / hair day, a lamington / chocolate / pie drive, a car boot sale, hamper raffles, sausage sizzles or a simple morning or afternoon tea.

The Trust Fund has a Fundraising, Marketing and Events Manager who can provide you with event management resources and advice to assist your organisation get the most out of their fundraising efforts. We can offer the following in exchange for your financial contribution:

- Acknowledgement as a Shimmer Supporter on the Trust Fund’s website and Facebook page (via company logo);
- A Shimmer Supporter A4 framed certificate of acknowledgement to be placed in a prominent position at your workplace such as the main foyer or staff room;
- Personal updates from the Trust Fund Board on the progress of the Cancer Centre from construction through to opening and beyond; and
- Use of the Trust Fund supporter logo for the life of the Shimmer Supporter package to help market your organisation as a proud supporter of the Cancer Centre.

**Your investment = We ask that your organisation raises or pledges \$5,000 - \$9,000** per financial year for three years.

If you do manage to raise significantly more than this amount, the Trust Fund will promote your Corporate Friend status to a Sparkle Supporter with the associated benefits.

*“We make a living by what we get, but we make a life by what we give.” Winston Churchill*